



SINGLE-WALLED STAINLESS STEEL ENCLOSURES

R-SERIES

SINGLE-WALLED STAINLESS STEEL ENCLOSURES R-SERIES

The R-series is a line of single-walled stainless steel installation enclosures. With the wide range of sizes available in this series, there is a solution for virtually any situation.



ADVANTAGES

- Flexibility regarding sizes, colours, and accessories
- Short delivery times
- Recyclable materials
- Usable lifetime of 30 years

SPECIFICATIONS

Standard design

- Inside-mounted door(s)
- Inside-mounted hinges
- 60-80 µm polyester powder coating
- Earthing points on door(s) and hull
- Comes with stainless steel door extender(s)
- With document holder

Material

Several qualities of stainless steel available (2 mm)

Closing/lock

Swing handle with three-point closure and a half europrofile cylinder.

Protection grade

IP43 or IP55

Installation

The enclosures come with a betonplex installation panel (15 mm) as standard.

1 COMPARTMENT 1 DOOR

Item. no	Height (mm)	Width (mm)	Installation Panel (mm)
Height x width			
RL600	770	600	665 x 460
RL800	770	800	665 x 660
RH600	1.150	600	1.045 x 460
RH800	1.150	800	1.045 x 660
RE800	1.450	800	1.345 x 660

Choice: depth 350 or 500 mm.



1 COMPARTMENT 2 DOORS

Item. no	Height (mm)	Width (mm)	Installation Panel (mm)
Height x width			
RL1000	770	1.000	665 x 860
RL1200	770	1.200	665 x 1.060
RH1000	1.150	1.000	1.045 x 860
RH1200	1.150	1.200	1.045 x 1.060
RH1400	1.150	1.400	1.045 x 1.260
RH1600	1.150	1.600	1.045 x 1.460
RE1000	1.450	1.000	1.345 x 860
RE1200	1.450	1.200	1.345 x 1.060
RE1400	1.450	1.400	1.345 x 1.260
RE1600	1.450	1.600	1.345 x 1.460

Choice: depth 350 or 500 mm.



2 COMPARTMENTS 2 DOORS

Item. no	Height (mm)	Width (mm)	Installation Panel (mm)	
			Switch comp.	Energy comp.
RL1200EN	770	1.200	665 x 660	665 x 290
RH1200EN	1.150	1.200	1.045 x 660	1.045 x 290
RE1200EN	1.450	1.200	1.345 x 660	1.345 x 290

Choice: depth 350 or 500 mm.



2 COMPARTMENTS 3 DOORS

Item. no	Height (mm)	Width (mm)	Installation Panel (mm)	
			Switch comp.	Energy comp.
RL1400EN	770	1.400	665 x 860	665 x 290
RH1400EN	1.150	1.400	1.045 x 860	1.045 x 290
RH1600EN	1.150	1.600	1.045 x 1.060	1.045 x 290
RH2000EN	1.150	2.000	1.045 x 1.460	1.045 x 290
RE1400EN	1.450	1.400	1.345 x 860	1.345 x 290
RE1600EN	1.450	1.600	1.345 x 1.060	1.345 x 290
RE2000EN	1.450	2.000	1.345 x 1.460	1.345 x 290

Choice: depth 350 or 500 mm.

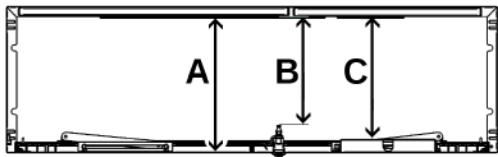


Choice: depth 350 or 500 mm.

Choice of IP value: IP 43 (splash-proof) or IP55 (spray-proof).

A second door is used for widths of more than 800 mm.

	Depth 350 mm	Depth 500 mm
A Installation depth door to installation panel	329 mm	479 mm
B Installation depth behind the handle	290 mm	440 mm
C Installation depth behind the doc. holder	267 mm	417 mm



OPTIONS / ACCESSORIES

R-SERIES



BASE



VENTILATION SYSTEM



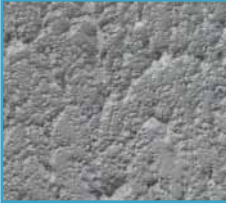
VARIOUS 1/2 EURO-PROFILE CYLINDERS



LED LIGHTING



SWIVEL PLATES FOR PLINTH



ANTI-FLYPOSTING COATING



SWIVEL PLATES FOR BASE



ANTI-GRAFFITI COATING



AVAILABLE IN ALMOST ALL RAL COLOURS



INSTALLATION PROFILES FOR SIDE WALLS



HEATING



REFERENCES



RH1200EN-IP55

The Netherlands has roughly 135,470 km of public roads used by millions of cars every day. Various traffic control systems are utilized to ensure a smooth flow of traffic. To make sure that these systems work properly, external switchboxes from Staka are often used. For example, you might see our RH1200EN-IP55 on the side of the A2.

This box is equipped with an anti-billposting coating. In the past, many external boxes were illegally covered by billposters. This can clog the ventilation screens, with all the consequences that this entails. Illegal billposters don't stand a chance with this coating.



RH1200-IP43

The Netherlands lives with water. For centuries we have been pioneers in the field of water management. Now more than ever, current environmental developments demand innovative solutions to prevent flooding.

That's why Staka produced the RH1200-IP43, shown above, for the Brabant Delta water board. This stainless steel external switchbox protects the various control components for the pumps of the local pressure sewer system in Roosendaal.



REFERENCES



More and more we live in an information society. The Internet, digital and cable TV: we expect these things to function without a hitch day and night. Digital systems play an increasingly important role in our lives.

As a result, demand is rising for secure housings such as the RE1400-IP43 in Geleen pictured above. This stainless steel installation box will protect the controls for the local fibre-optic network for the next 30 years.



Camera systems are being used more and more. Camera monitoring can be used for a variety of possible purposes, such as maintaining public order and safety, as well as traffic monitoring or counting people or vehicles.

You will find RH800-IP55 boxes from Staka at various industrial areas in North Brabant. This stainless steel external box offers a secure housing for the controls of the local camera system.



ABOUT STAKA

Staka has been translating its customers' requirements into high-quality switch enclosures since 1958, always in an ambitious, distinctive, and above all customer-focused manner. With a strong focus on quality and reliability, Staka has built up a loyal clientèle over the years. Our customers are active in a great variety of branches. By further extending knowledge and insight all the time, we are able to offer innovative and practical solutions that fully satisfy changing needs.

At Staka, we believe in the power of innovation and we constantly focus on improving every aspect of our product. We have high-quality production facilities, so we are able to deliver a constantly high quality at competitive prices. Staka employs professionals who have a passion for their work. The team comprises a strong mix of young and old, whereby years of experience are combined with new insights.

Staka is keen to profile itself as the best supplier in the field of switch enclosures. If you would like to find out how we can support you in achieving your goals, and you want to cut costs, increase quality, reduce errors, or shorten delivery times, please contact us.

Staka
Tel.: +31 (0) 162-46 89 50
www.staka.com

